



NOBLE
RESEARCH
INSTITUTE



**“No civilization has
outlived the
usefulness of its soils.
When the soil is
destroyed, the nation
is gone.”**

- Lloyd Noble



NOBLE RESEARCH INSTITUTE

MISSION STATEMENT

To deliver solutions to great agricultural challenges.

1

PRODUCTION ECONOMICS CHALLENGE:

Uncertain economic viability of agricultural production systems due to risks associated with variable climates, markets, and consumer demand.

A close-up photograph of dry, cracked soil. The soil is a reddish-brown color and is split into irregular, polygonal shapes by deep, dark cracks. Several small, bright green seedlings are sprouting from the cracks, indicating a struggle for survival in an arid environment. A single, dried, brown leaf lies on the surface of the soil in the upper right quadrant.

2

ENVIRONMENTAL CHALLENGE:

Degradation of soil health and ecosystem services resulting from poor management practices.

3

A group of approximately 15 people, mostly men wearing hats and light-colored shirts, are standing in a field of tall grass and yellow wildflowers. They appear to be engaged in a discussion or a field tour. The background shows a flat landscape with scattered trees under a blue sky with light clouds.

EDUCATION AND TRAINING CHALLENGE

Declining professional education and resources for land managers and agricultural producers.



7 Research Farms/13,500 Acres



Basic to Applied Research

**NOBLE
RESEARCH
INSTITUTE**

[ABOUT](#) [AGRICULTURE](#) [RESEARCH](#) [EDUCATION](#) [NEWS](#) [EVENTS](#) [SUBSCRIBE](#)



[RESEARCH](#)

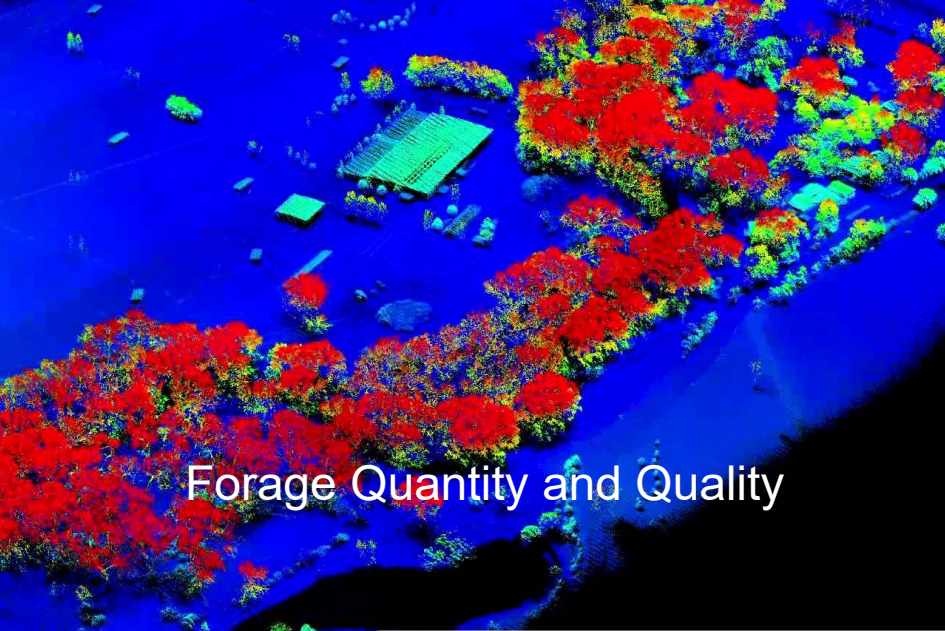
[FACULTY](#)

[AREAS OF RESEARCH](#)

[CORE FACILITIES](#)

[CLUSTERS](#)

[SCIENTIFIC PUBLICATIONS](#)



Forage Quantity and Quality



Wildlife & Grazing Management

Applied Technologies



Cattle Weight



Asset Inventory

Producer Relations



Forage-based beef cattle



Land Resources of Cooperators

(1,935,298 total acres)

	<u>acres</u>	<u>% total</u>
Rangeland	929,205	48.0
Timber, ponds (25,392 ac.)	362,664	18.7
Bermudagrass, etc.	323,138	16.7
Winter annuals	71,116	3.7
Wheat (grain)	52,468	2.7
Alfalfa/hay	28,460	1.5
Fescue, etc.	23,724	1.2
Other crops, ann. forages	30,777	1.6
Pecans	27,568	1.4

Resource inventory data

Average cooperator

1,385 acres

83 cows, 4 bulls

69 stockers

(~20% without livestock)

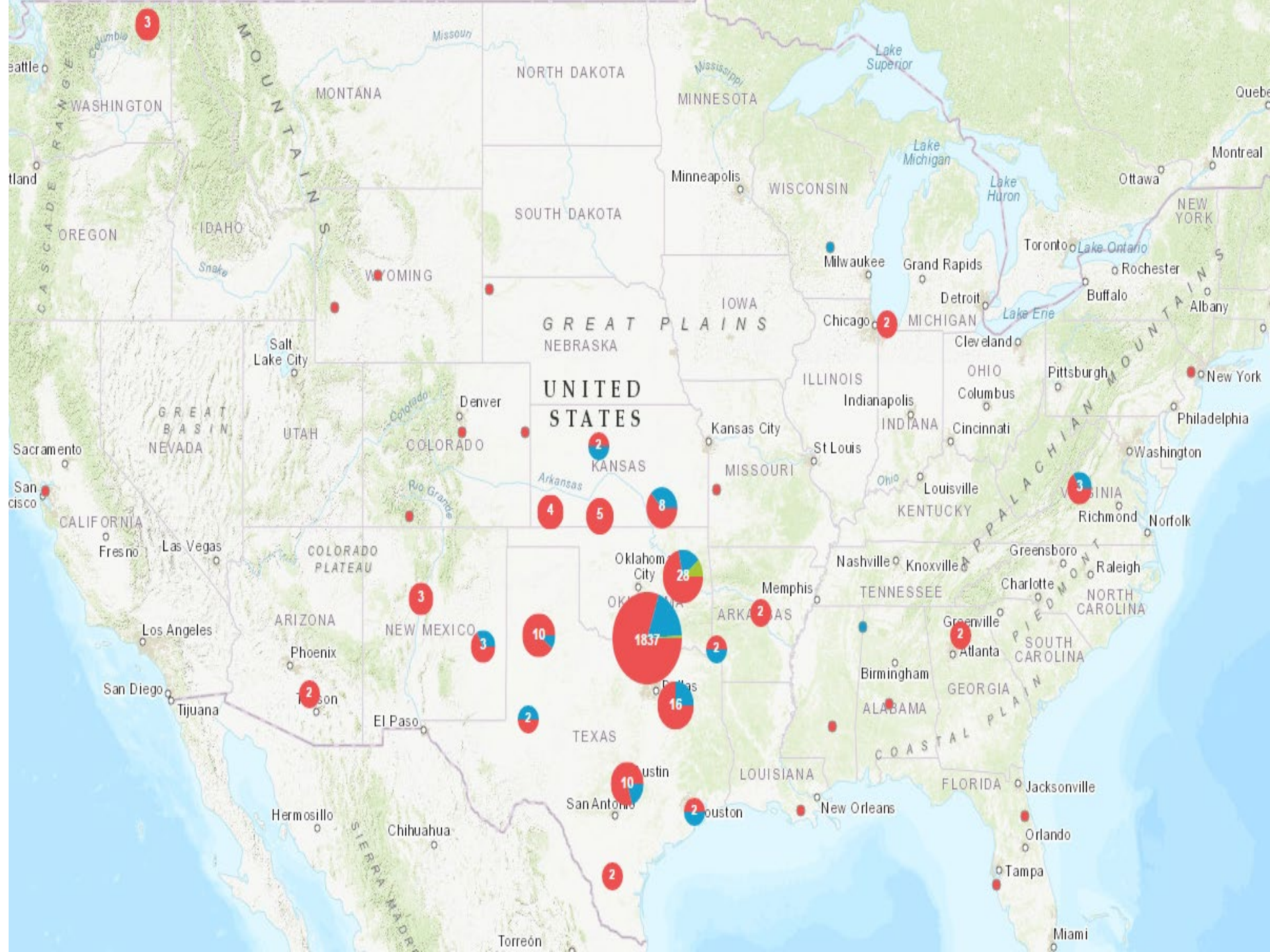
Resource inventory data

Upper range

72,000+ acres

2,700+ cows

7,000+ stockers



Education and Outreach





Texoma Cattlemen's Conference **3**

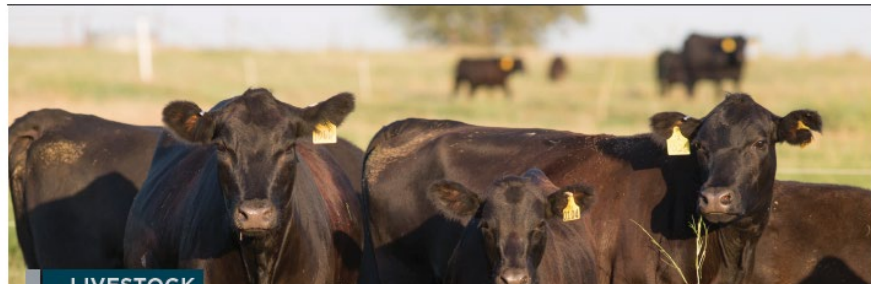


New Fescue Cultivar **4**



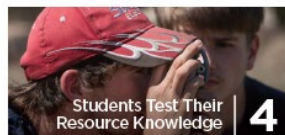
Pecan Management Calendar **6**

NOBLE NEWS & VIEWS



LIVESTOCK

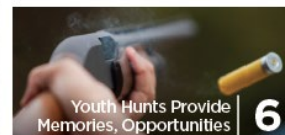
Using Berm Pastures to Nutrient Re



Students Test Their Resource Knowledge **4**



Inspiring the Next Generation **5**



Youth Hunts Provide Memories, Opportunities **6**

NOBLE NEWS & VIEWS



EDUCATION

One Noble Summer: About the Lloyd Noble Scholars Program

NOBLE NEWS & VIEWS

IN THIS ISSUE

- Summer Scholars | **1**
- Envirothon | **4**
- Microscopes | **5**
- Youth Hunts | **6**
- Graduate Student Fellowships | **9**

UPCOMING EVENTS

For more information or to register, visit www.noble.org/events or call 580-223-5810. Preregistration is requested. For other agricultural questions, please call our Ag Helpline at 580-224-6500.



So You Want to Grow Series

Pecans | Sept. 4
Vegetables | Sept. 11
Fruits | Sept. 18

This series will cover various practices of site preparation, irrigation and variety selection for specialty crop production of pecans, vegetables and fruit.

6:30-8 p.m.
Noble Research Institute
Krusse Auditorium
No Registration Fee



SEPTEMBER **6**

Backyard Farming: Intensive Small Space Food Systems
6-8 p.m.
Small-Scale Ag Demo Area
No Registration Fee



SEPTEMBER **25**

Pecan 101 Workshop
9 a.m.-4 p.m.
Krusse Auditorium
\$25, Includes Lunch



OCTOBER **4**

Feral Hog Management Training
8:30 a.m.-noon
Pavilion
No Registration Fee



OCTOBER **18**

Pecan Harvest Field Day
1:30-4 p.m.
Noble Research Institute
Red River Farm
No Registration Fee



Cover Crop Series: 26 episodes

NOBLE
RESEARCH
INSTITUTE

[ABOUT](#) [AGRICULTURE](#) [RESEARCH](#) [EDUCATION](#) [NEWS](#) [EVENTS](#) [SUBSCRIBE](#)



Sunn Hemp: Noble Cover Crop Series



Watch later



Share

COVER CROP SERIES



SUNN HEMP

National Cover Crop Breeding Network

[WHAT WE DO](#)[HOW WE WORK](#)[GET INVOLVED](#)[BLOG](#)[NEWS](#)[ABOUT US](#)

New National Research Initiative Aims to Improve Cover Crops

📅 POSTED ON MARCH 22, 2017

📁 CATEGORIES: [NEWS](#)

💬 [NO COMMENTS YET](#)

WASHINGTON — The Foundation for Food and Agriculture Research (FFAR) and The Samuel Roberts Noble Foundation launched a national cover crop initiative today during a special press conference at the National Press Club in Washington, D.C.

The \$6.6 million research initiative, made possible by a \$2.2 million grant from FFAR, will promote soil health through the development and adoption of new cover crops across the United States.

"The Foundation for Food and Agriculture Research is committed to improving the nation's soil health, which is essential to ensuring a productive and sustainable future for food and agriculture," said Sally Rockey, Ph.D., executive director of FFAR. "We look forward to working with the Noble Foundation and a talented team of researchers to develop better-than-ever, soil health-promoting cover crops that will contribute to thriving farms across the United States."

Cover crop is a term applied to a number of plant species that farmers, ranchers and landowners may plant to help manage soil erosion and fertility, preserve moisture content, and control weeds and diseases. "Cover crops play a significant role in sustainable agriculture practices," said Bill Buckner, Noble Foundation president and chief executive officer. "The Noble Foundation has been a leader in developing forages (grazeable plants for livestock) and new cover crop varieties since the 1950s. It's only fitting to help further research advancement in this area at the national level, which is made possible through the FFAR grant and our team of collaborators."

The initiative will bring together many collaborators, including representatives from the seed industry, the U.S. Department of Agriculture-Agricultural Research Service (ARS) and Natural Resources Conservation Service (NRCS), three land grant universities, and an existing Legume Cover Crop Breeding Team, comprising another six land grant universities, ARS sites and a producer network.



NOBLE
LAND STEWARDSHIP



ESM Program

MISSION

A wide-angle photograph of a herd of black cattle grazing in a lush green field. The field is filled with tall grass and numerous small blue flowers. In the background, there is a dense line of green trees under a clear blue sky. The overall scene is bright and vibrant, suggesting a healthy, well-maintained agricultural landscape.

To advance ecosystem service markets that incentivize farmers and ranchers to improve soil health systems that benefit society



Jeff Goodwin

Conservation Stewardship Lead &
Range and Pasture Consultant
Office 580-224-6469
djgoodwin@noble.org

